

pennekamp ▶

—  
Ware Transfer WT



The ware transfer head is designed to be operated at a speed of up to 650 bottles per minute according to the bottle diameter. The transfer head is available with different numbers of fingers and designs.

#### Available finger designs and spacing:

- 12 Fingers bottle diameter from 97 mm to 120 mm
- 18 Fingers bottle diameter from 81 mm to 96 mm
- 24 Fingers bottle diameter from 66 mm to 80 mm
- 29 Fingers bottle diameter from 51 mm to 65 mm

The finger insulation pads are designed as wear unit on the fingers and are easily replaceable. With this design, the finger touches the glass ware somewhere in the middle, near the point of gravity. The finger itself is 50mm in height to support a larger area of the bottle. The standard ware transfer performs with a wide range of shapes, such as round, square and oval (flasks), even at higher speeds.

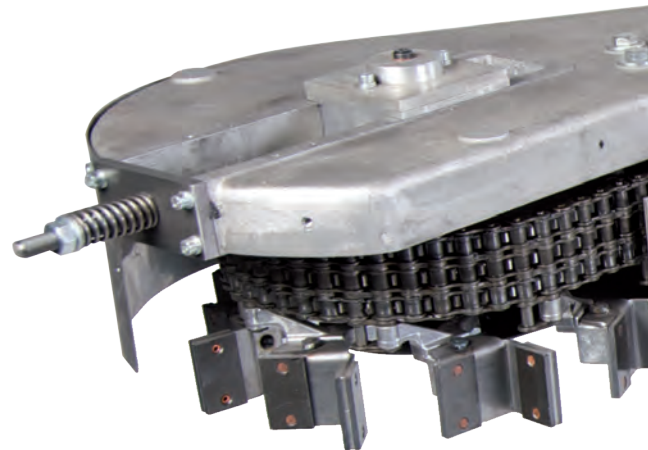
## Ware Transfer WT

The ware transfers are the connecting unit between the IS machine conveyor and the cross conveyor. Usually, the ware transfers are designed for a 90° angle. The precision and performance of such units depend very much on the setting and operation of the IS machine pushers.

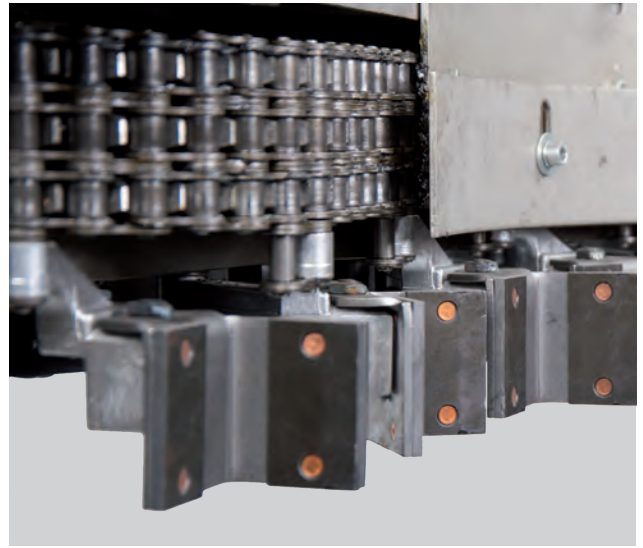
Generally, the ware transfer consists of a complete drive frame and its components such as gear box, coupling, shaft and radial ware transfer head type WT650 but without the drive motor.

The entire ware transfer is installed on a plate system, which allows the horizontal alignment. It may be performed for both axes individually. By use of a spindle system, the ware transfer may also be adjusted in its height, according to the requirements and geometrical needs of the glass ware.

The drive frame will be equipped with the support for the drive motor, specified and provided by the buyer. Furthermore, the supply includes the mechanical gear box as well as a special differential gear box that allows advancing or retarding the ware transfer finger directly at the machine, while being in operation. However, the Pennekamp system allows also the synchronization of the transfer from the control room (IS machine control).







## Features

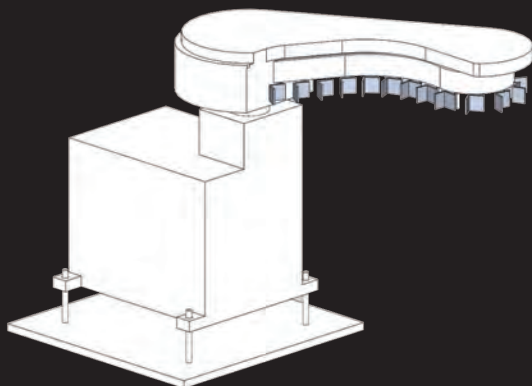
- Various numbers of fingers (bottle diameter)
- Finger plug in system
- Insulation material replaceable
- Wide transfer fingers (at ~50mm)

### Option:

- Drive system with motor and synchronization

### Ware Transfer WT

Length/Depth	Drive 500mm
Width	Drive 700mm
Height	Drive 730mm
Working height	850 - 1.070mm



**pennekamp** ►



Ernst Pennekamp GmbH & Co. OHG

Königsfelderstraße 38-42  
D-58256 Ennepetal

T +49 (0) 23 33 605 – 0  
info@pennekamp.de  
[www.pennekamp.de](http://www.pennekamp.de)